

1

2

3

4

5

6

7

8

A

B

C

D

E

F

A

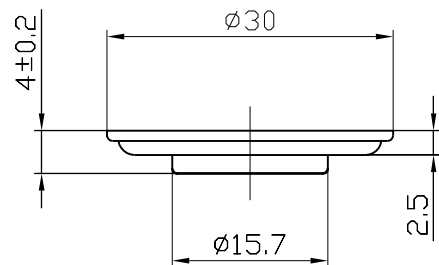
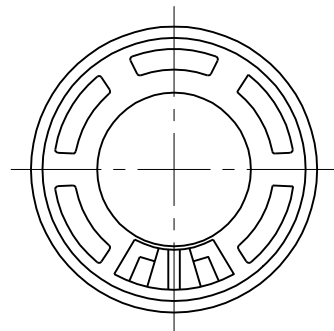
B

C

D

E

F



1	Items	Specifications	Test condition
2	Rated Impedance	8 ± 15%	at 800Hz
3	Voice coil size/material		
4	Cone edge/material		
5	Rated Noise Power	0.25W	
6	Max.Input Power	0.50W	
7	Resonant Frequency	600± 20% Hz	
8	Rated Frequency Range	f0~ 5.0KHz	
9	Ouput Sound Pressure Level	89± 3dB	
10	Distortion	5%	at 1000Hz0.25W
11	Operation	Must be normal	1.4Vrms sine wave
12	Sweep test	Must be normal	1.4V sine wave
13	Load test	Must be normal	white noise with weighted filter 1.2vrms sine wave 24 Hrs
14	Heat test	Must meet item 6 & 12 after test	50 ± 2 5Hrs.
15	Humidity test	Must meet item 6 & 12 after test	40 ± 2 90/95%RH 16Hrs.
16	Cold test	Must meet item 6 & 12 after test	-25 ± 2 16Hrs.
17	Flux density	GAUSS	
18	Magnet	Ø12.5x1.3 mm	
19	Weight	5.2g	

TOLERANCES UNLESS NOTED OTHERWISE .X ± .XX ± .XXX ± 90° FORMED +2° ANGLES -1°	DRAWN		KEPO MODEL NO.	CUSTOMER			
	DESIGN		KPSP3040MN-08/0.25A	CUSTOMER NO.			
	CHECKED		DWG NO.				
	APPROVED		DATE 04.05.10	VER	1.1	SCALE	
	CONTRACT NO.		KP3.841.115	UNIT	mm	SHEET	
FIRST ANGLE PROJECTION			AGENCY APPROVAL	KEPO CO.,LTD.			TEL:(+86)574-88370330 FAX:(+86)574-88370329

NO.	DATE	REVISION	REFERENCE DWG
△			
△			
△			
△			

1

2

3

4

5

6

7

8